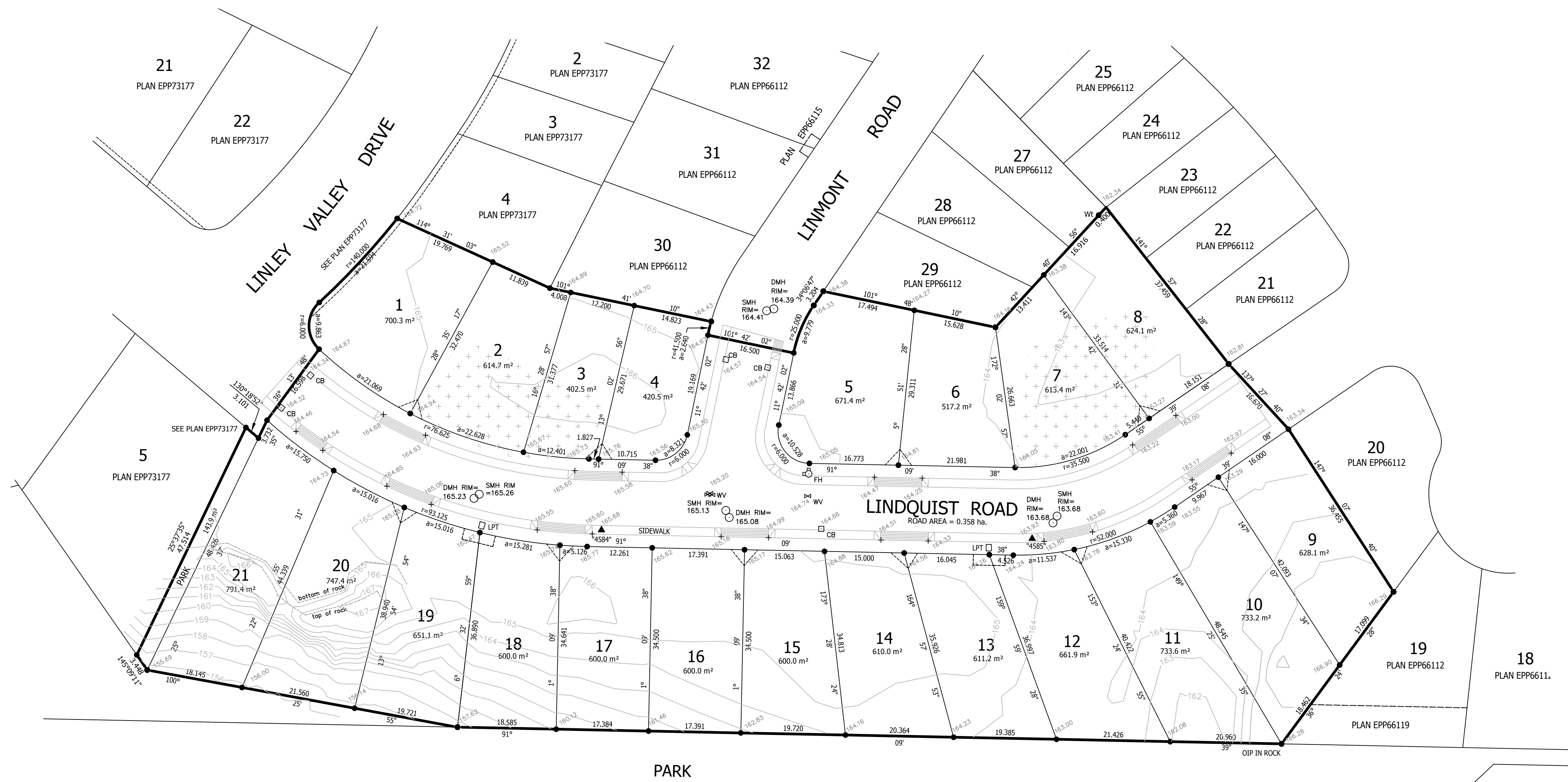




BOOK OF REFERENCE		
PARCEL	AREA	MBFE
LOT 1	700.3 m ²	163.02 m
LOT 2	614.7 m ²	164.00 m
LOT 3	402.5 m ²	164.11 m
LOT 4	420.5 m ²	163.31 m
LOT 5	671.4 m ²	162.52 m
LOT 6	517.2 m ²	162.71 m
LOT 7	613.4 m ²	162.41 m
LOT 8	624.1 m ²	162.21 m
LOT 9	628.1 m ²	162.08 m
LOT 10	733.2 m ²	162.42 m
LOT 11	733.6 m ²	162.60 m
LOT 12	661.9 m ²	162.83 m
LOT 13	611.2 m ²	163.25 m
LOT 14	610.0 m ²	163.59 m
LOT 15	600.0 m ²	163.52 m
LOT 16	600.0 m ²	163.44 m
LOT 17	600.0 m ²	163.68 m
LOT 18	600.0 m ²	163.94 m
LOT 19	651.1 m ²	164.04 m
LOT 20	747.4 m ²	164.12 m
LOT 21	791.4 m ²	163.66 m



GENERAL NOTES:
 DISTANCES AND ELEVATIONS ARE IN METRES.
 ELEVATION DATUM IS DERIVED FROM INTEGRATED SURVEY MONUMENT 14H2757, ELEVATION = 160.87m.

FIELD SURVEY COMPLETED FEBRUARY 13, 2018. CONTOURS ACCURATELY REPRESENT POST SUBDIVISION CONSTRUCTION GRADING OF LOTS.

THIS PLAN HAS BEEN PREPARED IN ACCORDANCE WITH THE MANUAL OF STANDARD PRACTICE AND IS CERTIFIED CORRECT. THE PLAN WAS COMPLETED ON THE 19TH DAY OF MARCH, 2018.

Brian S. Henning B.C.L.S.
 THIS DOCUMENT IS NOT VALID UNLESS ORIGINALLY SIGNED AND SEALED

FINAL LOT GRADES APPROVED
 THIS _____ DAY OF _____, 2018.

APPROVING OFFICER CITY OF NANAIMO

LEGEND

+ 164.46	SPOT ELEVATION (TYPICAL).
● 164.73	STANDARD IRON POST FOUND WITH ELEVATION (TYPICAL).
▲ 458+*	TRAVERSE HUB FOUND WITH ELEVATION (TYPICAL).
2532	DENOTES TAG NO
○ SMH RIM =165.13	SANITARY SEWER MANHOLE / STORM SEWER MANHOLE WITH CENTRE OF LID ELEVATION (TYPICAL).
□ CB 164.32	CATCH BASIN WITH GUTTER ELEVATION (TYPICAL)
—	CONTOURS POST CONSTRUCTION (1.0 METRE INTERVAL).
+	EXTENT OF STRUCTURAL FILL IN EXCESS OF 0.6 m DEPTH PER DRAWING SUPPLIED BY LEWKOWICH ENGINEERING ASSOCIATES

DRAWING: **FINAL LOT GRADES PLAN**

DATE: FEB 13/18

SCALE: 1:500

DRAWN: CH

FILE: 10102-94 FLG

SHEET: 1 OF 1

WILLIAMSON & ASSOCIATES
 PROFESSIONAL SURVEYORS

3088 BARONS ROAD NANAIMO B.C. V8T 4B5
 PHONE: (250) 756-7723 FACSIMILE (250) 756-7724
 EMAIL: WAFS@TELUS.NET

NO.	DATE	REVISION
00	FEB. 13/18	FIRST ISSUE.
01	MAR. 19/18	MINOR AMENDMENTS

SITE LEGAL DESCRIPTION
 LOTS 1 TO 21, DISTRICT LOT 32, WELLINGTON DISTRICT, PLAN EPP73181

BENCHMARK DESCRIPTION
 ELEVATIONS ARE GEODETIC REFERRED TO MONUMENT NO. 14H2757 LOCATED ON LINLEY VALLEY DRIVE. ELEVATION 160.874m

ENGINEER'S SEAL	DESIGN RHS
	DRAWN DP
	CHECKED
	PLOT DATE 02-23-18
	PRINT DATE
HORIZONTAL SCALE 1:500	VERTICAL SCALE

CLIENT NAME
LAMONT LAND INC.

PROJECT NAME
**LINLEY POINT DEVELOPMENT
 PHASE 5**

DRAWING TITLE
FINAL LOT GRADES PLAN

PROJECT No. 0831-016
 DRAWING No. 06
 REVISION No. 01
 CITY PLAN FILE No. 22200

ENG01353 / SUB01247