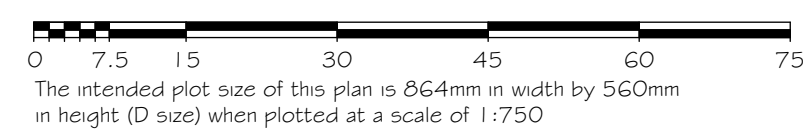


SUBDIVISION PLAN OF LOT 8, BLOCK 6, SECTION 16, RANGE 1, CEDAR DISTRICT, PLAN 2041
 PURSUANT TO SECTION 946, LOCAL GOVERNMENT ACT

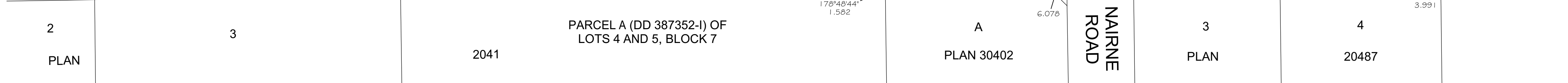
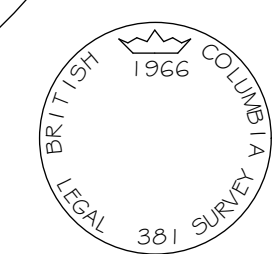
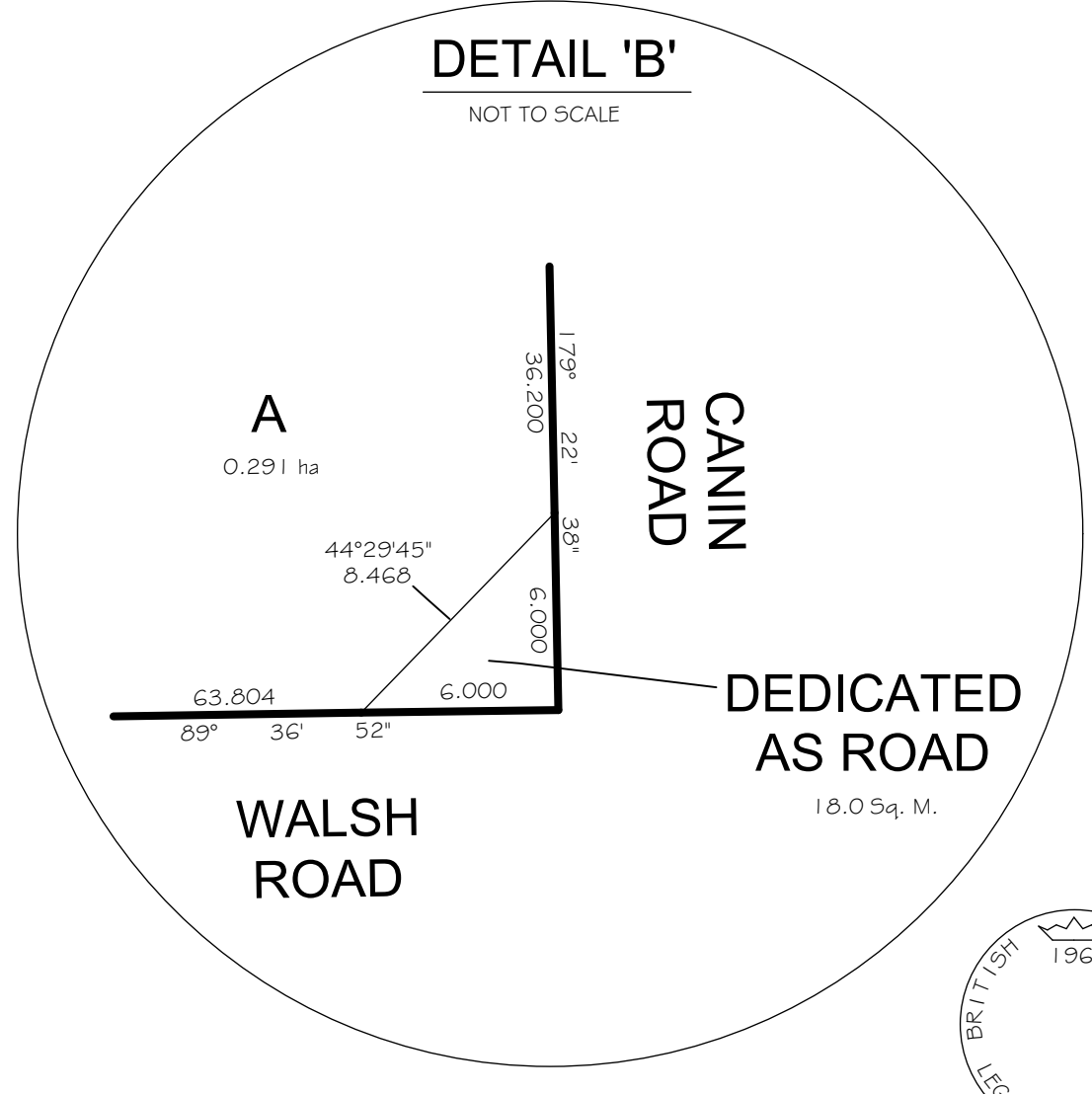
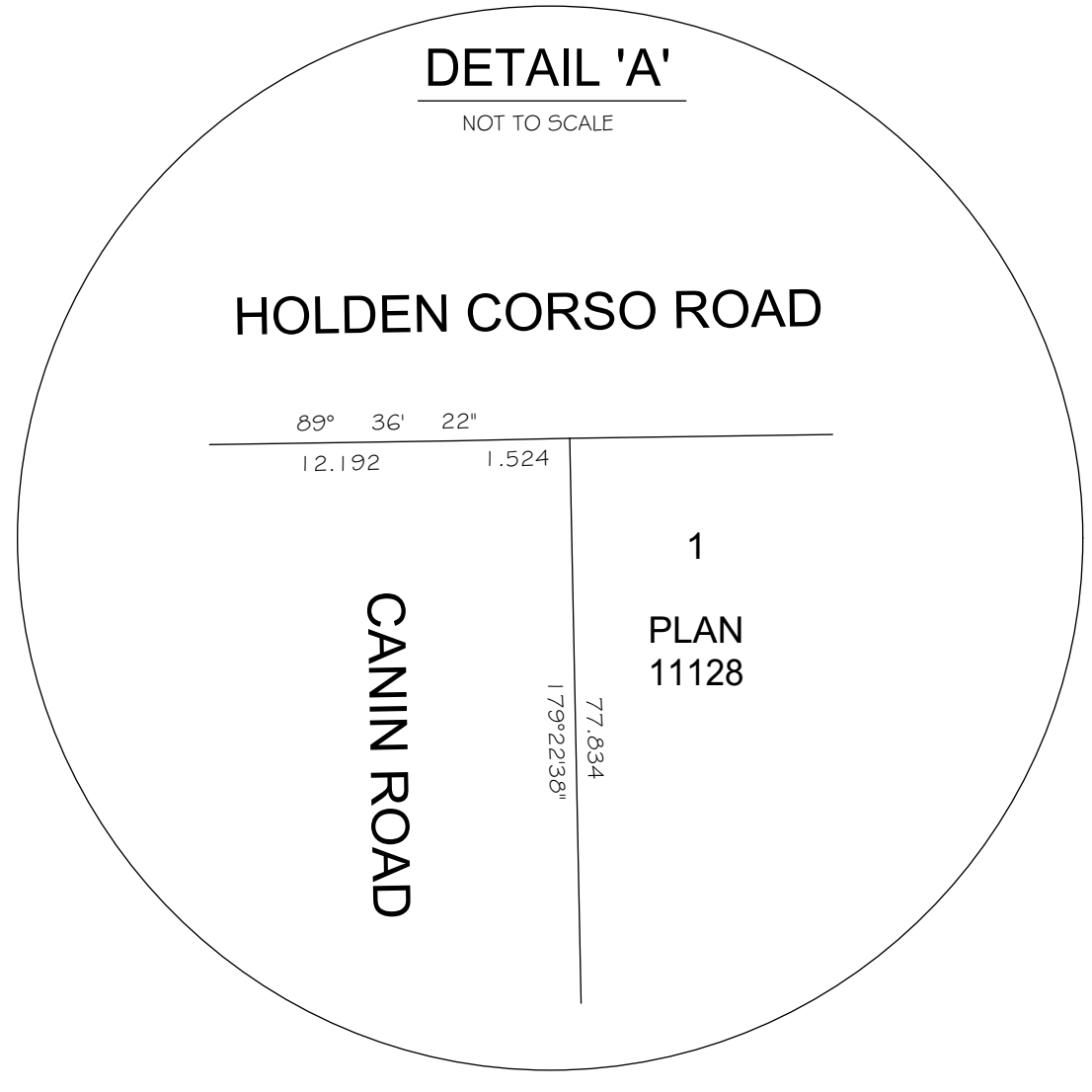
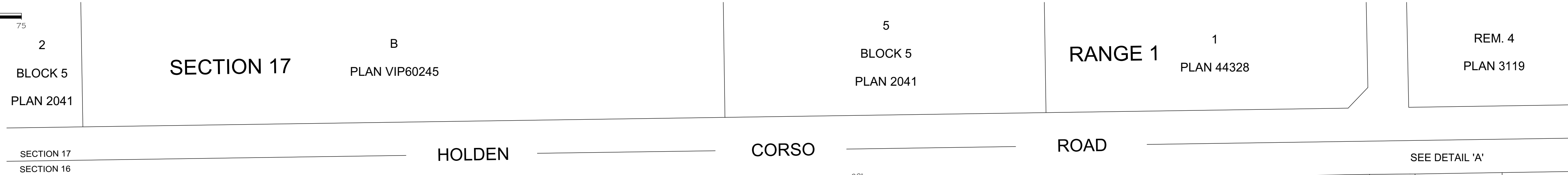
PLAN EPP36874

BCGS 92G.011



LEGEND

- denotes Standard Iron Post found
- denotes Standard Iron Post placed
- denotes Standard Concrete Post found
- Sq. M. denotes Square Metres
- All distances shown are in metres
- Astronomic bearings are derived from Plan 48768



This plan lies within the jurisdiction of the Approving Officer for the Ministry of Transportation and Infrastructure

This plan lies within the Regional District of Nanaimo
 The field survey represented by this plan was completed on 2nd day of May, 2014.
 Douglas W. Holme, BCL5 792